

PROPHECY[®] INBONE[®]

Preoperative Navigation Guides



Simple. Fast. Accurate.
Simple. Fast. Accurate.

PROPHECY®

Envision the Results™

PROPHECY® Preoperative Navigation Guides have ushered in a new era of total ankle arthroplasty. Through the combination of computer imaging and the patient's own CT scan, a patient-specific preoperative plan is developed. Implant sizing and alignment are determined using the patient's unobstructed anatomic landmarks and the surgeon's instructions. PROPHECY® Preoperative Navigation Guides are then created which set resection guide locations reducing intraoperative steps to simplify surgery.

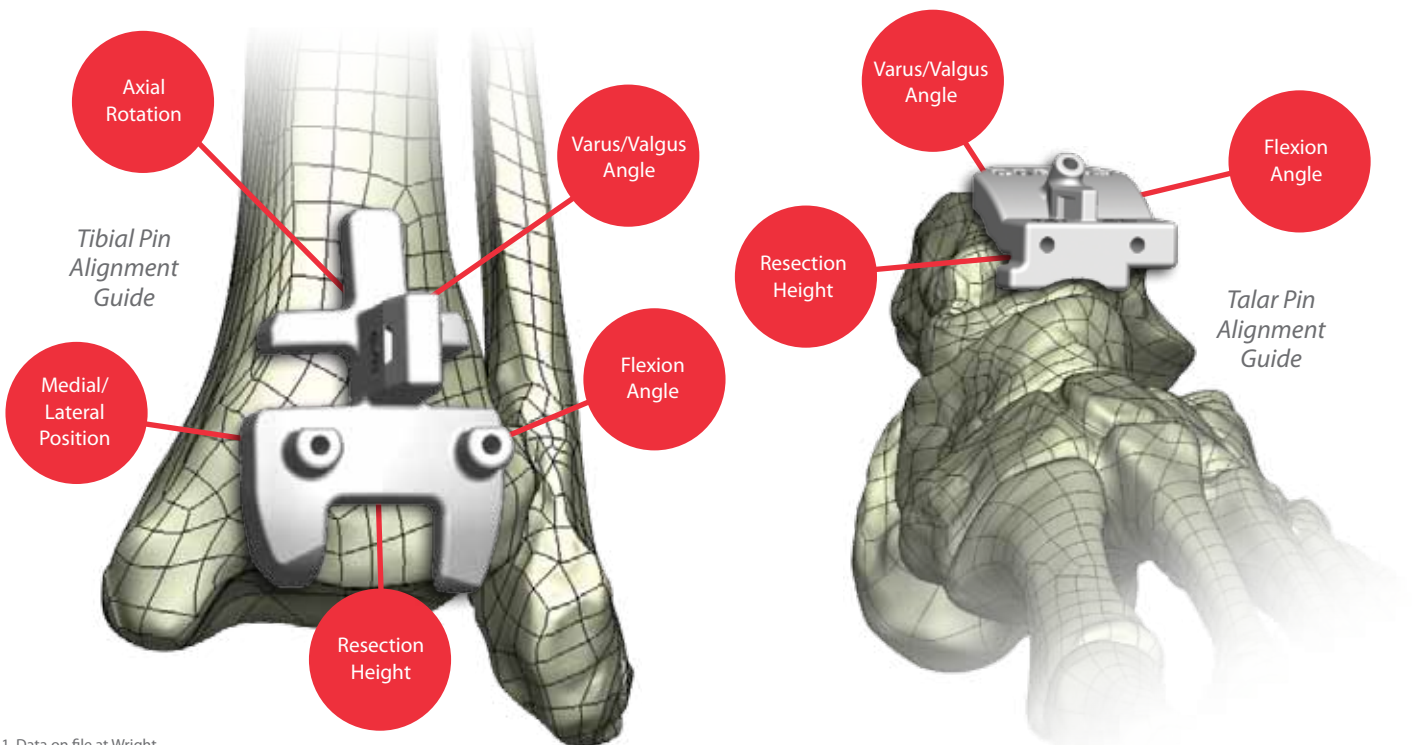
PROPHECY® Guide Benefits

PROPHECY® guides provide the alignment accuracy of the traditional INBONE® Total Ankle System while reducing the surgical and fluoroscopic steps allowing the potential for:

- Less procedural complexity
- Less fluoroscopy exposure for patients, surgeons, and staff
- Increased OR efficiency

PROPHECY® Surface Match Technology

The PROPHECY® guides are designed to match the unique bone surface anatomy of each patient and fit securely into position, setting resection guide locations according to component alignment determined preoperatively.



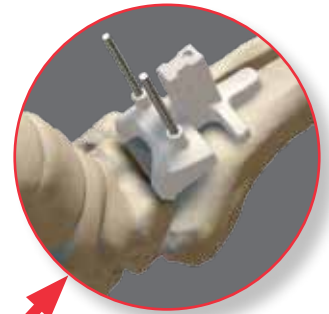
The PROPHECY® Process



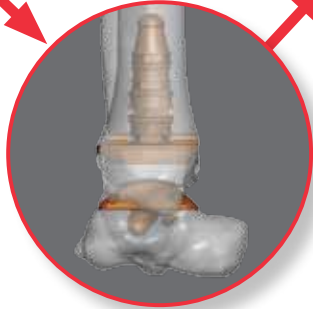
The patient receives a CT scan following the PROPHECY® protocol.



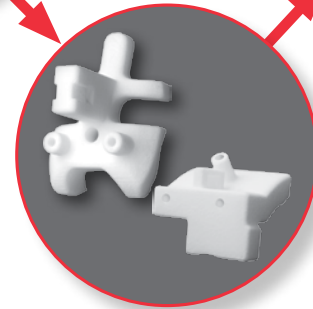
The surgical plan is approved by the surgeon via the PROPHECY® Guide website. The surgeon may alter the plan if desired.



Surgery is performed in accordance with the preoperative plan.



Virtual preoperative alignment is performed according to surgeon preferences.



A rapid prototyping machine produces patient-specific PROPHECY® guides out of high resolution nylon. Guides are then sent out for surgery.

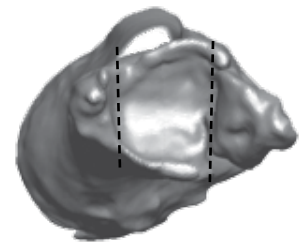
How is Virtual Surgery Performed?



Coronal preoperative limb alignment with mechanical and anatomic axes identified.



Sagittal preoperative limb alignment with mechanical and anatomic axes identified.



Medial and lateral gutter angles identified to determine axial rotation.



Implant overlaid onto axis preference with defining rotation.



Implant positioned and sized for optimal bone coverage and minimal bone resection.



Resection height set to recreate natural talar dome.

PROPHECY® INBONE® Surgical Overview

Tibial Preparation



1. Orient the PROPHECY® guide onto the tibia until the "Surface Match" fit is found.



2. Pin the tibia guide in place.



3. Remove the PROPHECY® guide and replace with the metal resection guide.



4. Cut through the metal resection guide to make the tibial resections.

Talar Preparation



1. Orient the PROPHECY® guide onto the talus until the "Surface Match" fit is found.



2. Pin the talar guide in place.



3. Remove the PROPHECY® guide and replace with the metal resection guide.



4. Cut through the metal resection guide to make the talar resection.

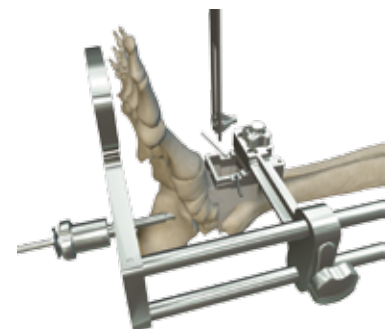
Tibial Canal Preparation



1. Install the PROPHECY® tibial stem guide into the resected joint space.



2. Attach the c-bracket assembly to the tibial stem guide.



3. The c-bracket provides a method of preparing the tibial intramedullary canal for implantation of the INBONE® Total Ankle tibial components.

INNOVATION
INNOVATION

INBONE[®] II Total Ankle System

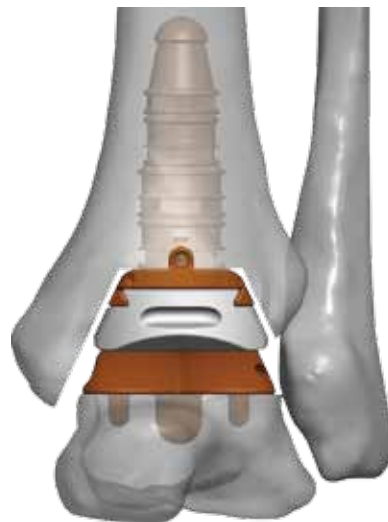
Since its inception in 2005, the INBONE[®] Total Ankle System has continued to be the most distinctive and innovative total ankle replacement system on the market. By offering the first total ankle system that provides intramedullary instrumentation for accurate component positioning and the first ankle prosthesis with a choice of articulation geometries, Wright Medical continues to redefine innovation in ankle arthroplasty.

Now in 2012, we are taking a proven technology from knee arthroplasty and introducing it to the ankle to become the **first** and **only** system to offer the benefits of preoperative navigation for total ankle replacement.

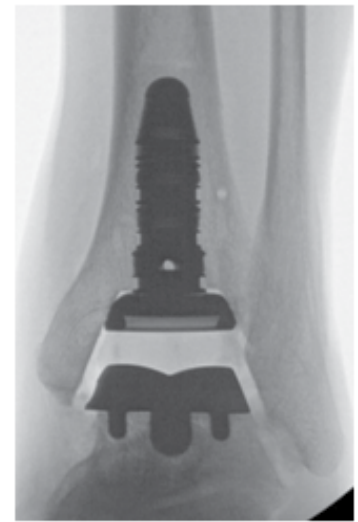
Envision the Simplicity

Envision the Accuracy

Envision the Results[™]



PROPHECY[®]
Preoperative Plan



Postoperative
X-ray



Wright Medical Technology, Inc.

1023 Cherry Road
Memphis, TN 38117
800 238 7117
901 867 9971
www.wmt.com

Wright Medical EMEA

Atlas Arena, Australia Building
Hoogoorddreef 7
1101 BA Amsterdam
the Netherlands
011 31 20 565 9060