

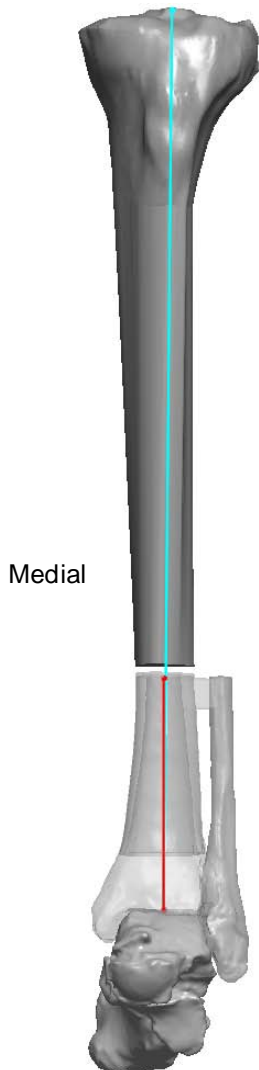
CASEINFFF – Surgeon Name

Patient: Foot Trainer – Left – Surgery Date

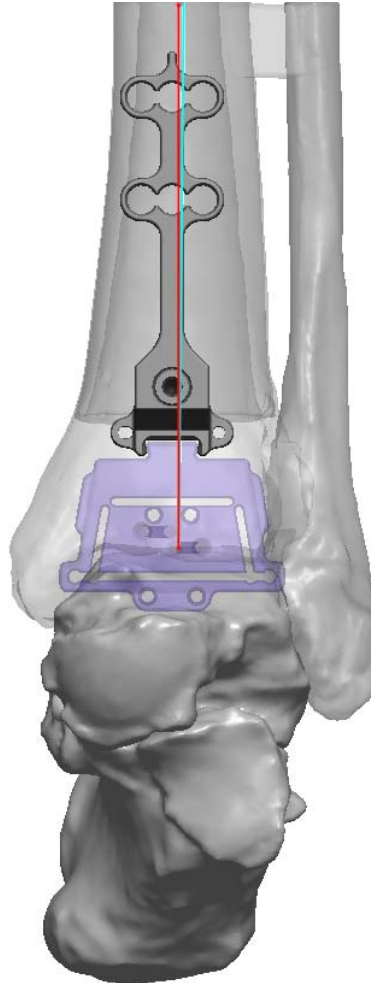
## INFINITY® Size 4 Left Tibia & Size 4 Talus

### Anterior Views

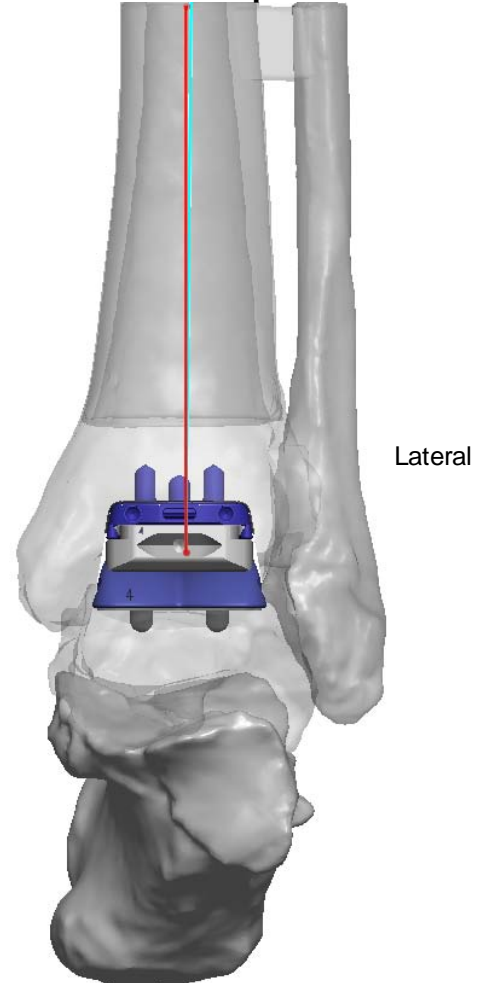
Pre-Op



Corrected



Post-Op



 Tibia Mechanical Axis  
 Tibia Anatomic Axis

**Axis Angles**  
**Anatomic vs. Mechanical**  
 Coronal = 0.5°

**Notes**

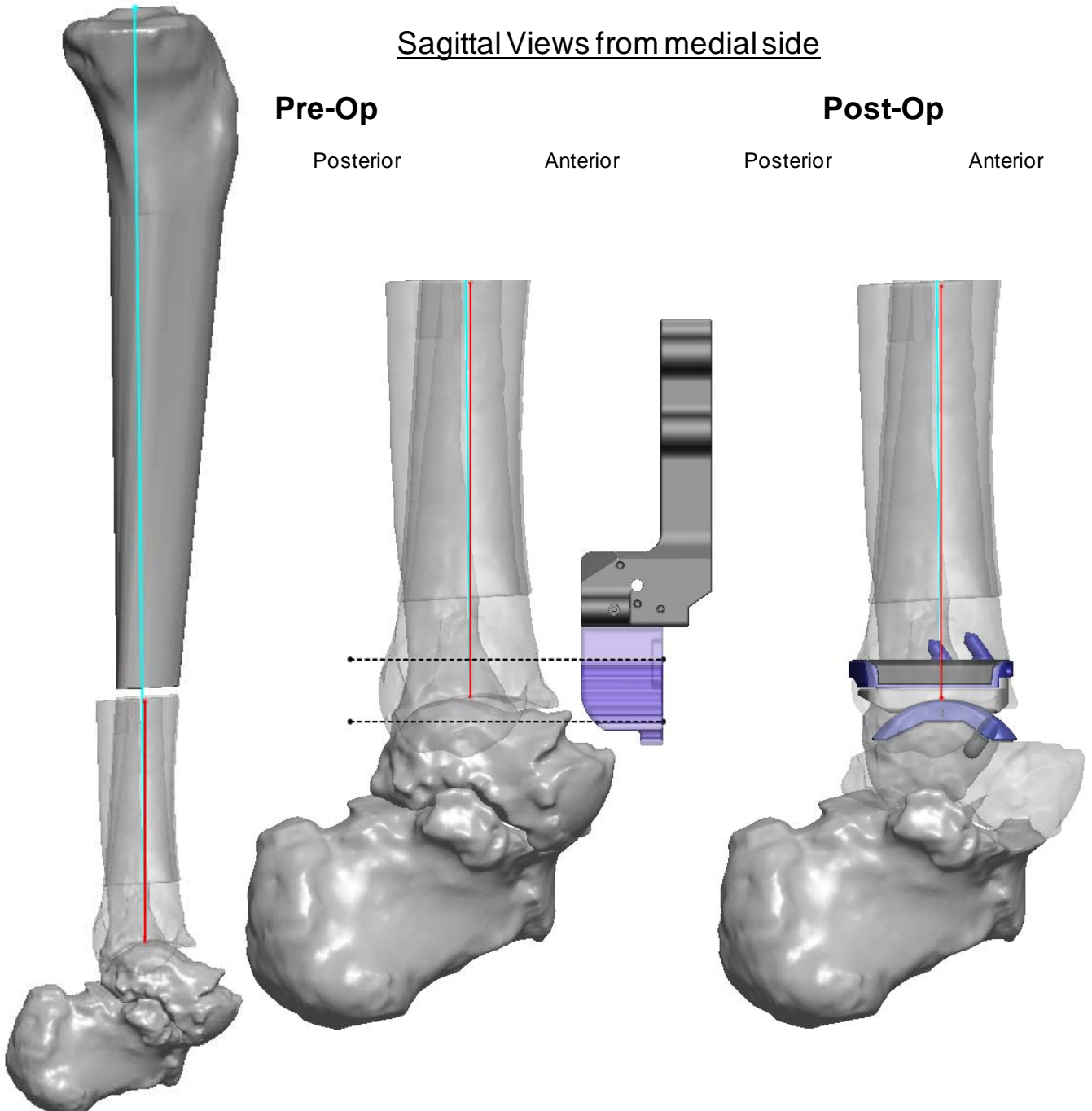
Tibia implant is set perpendicular to the anatomic axis.

Medial/Lateral placement is set:

- to match the medial gutter
- minimize the cuts on the medial malleolus and fibula

## INFINITY® Size 4 Left Tibia & Size 4 Talus

### Sagittal Views from medial side



**Pre-Op**

**Post-Op**

Posterior

Anterior

Posterior

Anterior

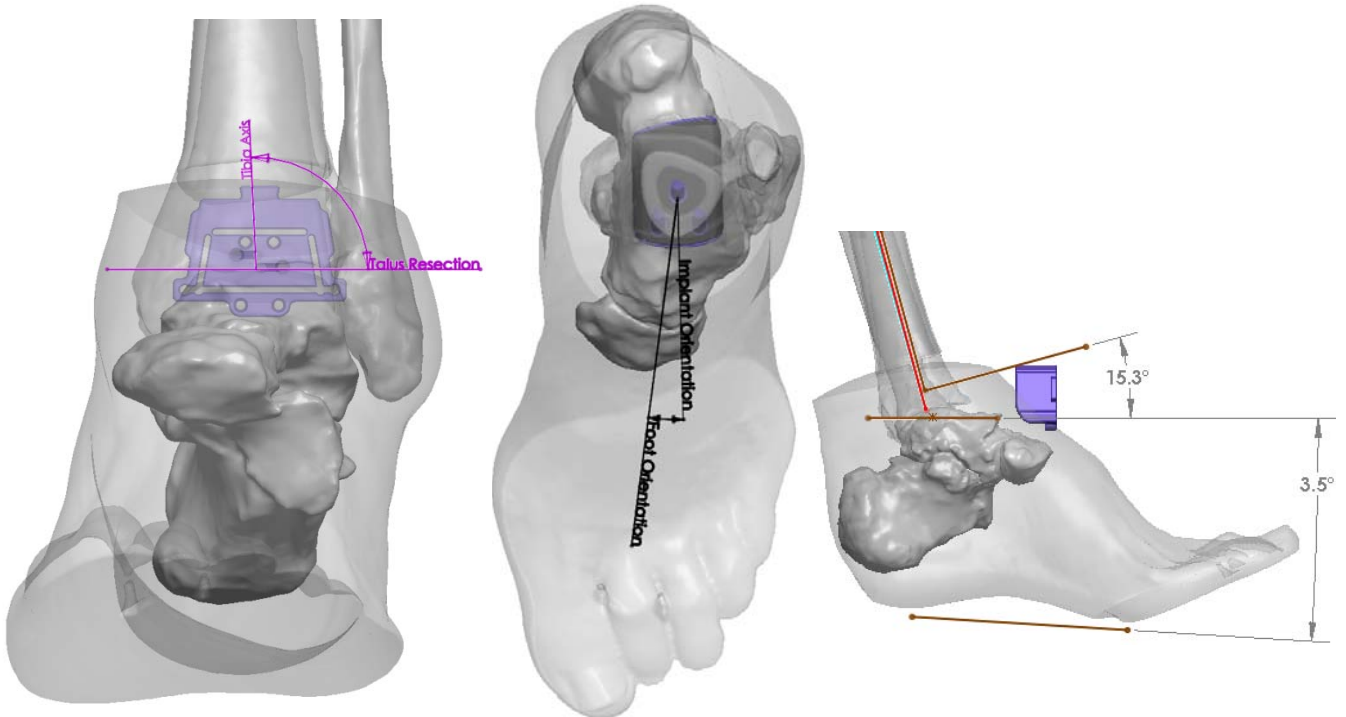
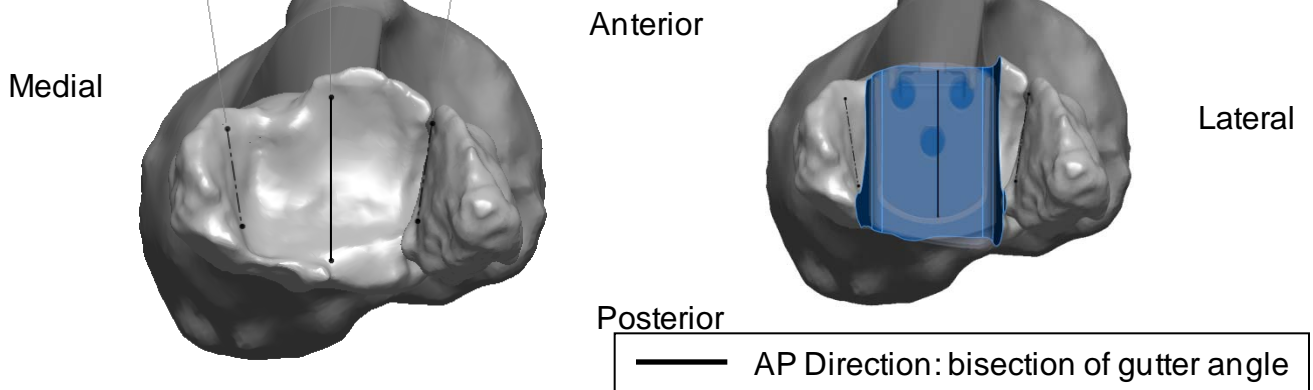
- Tibia Mechanical Axis
- Tibia Anatomic Axis
- Resection Planes

**Axis Angles**  
**Anatomic vs. Mechanical**  
Sagittal = 0.6°

## INFINITY® Size 4 Left Tibia & Size 4 Talus

### Tibia Rotation

#### Distal Views



## Notes

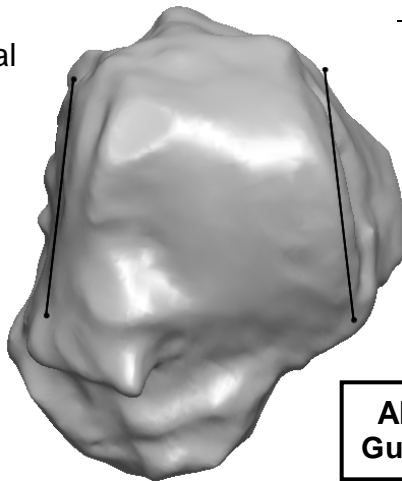
- Tibia anterior direction: bisection of the medial and lateral gutters
- Tibia gutter angle: 17.3°
- The tibia implant is placed to match the anterior edge of the resection.
- Internal/External orientation is 8.9° external to the approximate foot orientation.
- Talus resection planned to result in a 3.6° varus correction.
- Foot orientation during the CT scan: 15.3° of plantar flexion

## INFINITY® Size 4 Left Tibia & Size 4 Talus Talus Rotation

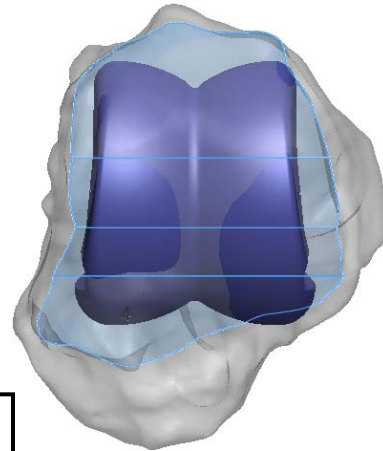
**Size 4**

### Top Views

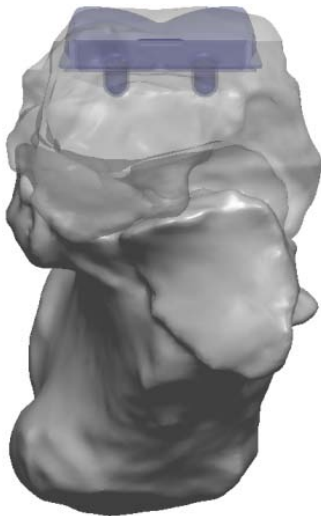
Lateral



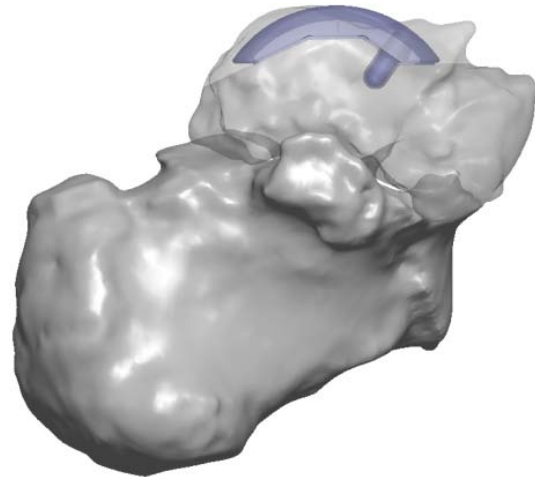
Medial



**AP Direction:  
Gutter Bisection**



### Anterior View



### Sagittal View from medial

### Notes

- Size 4 talus implant is selected to maximize bone coverage while minimizing implant overhang.
- Talus anterior direction: bisection of the medial and lateral gutters.
- Gutter angle: 13.2°.
- The resection depth is set so the implant dome matches the natural talar dome and is 2 mm proximal to the talar neck.

---

## INFINITY® Size 4 Left Tibia & Size 4 Talus

### Summary

#### Tibial Alignment Method

- Tibia implant is set perpendicular to the anatomic axis.
- Anterior direction is set by the bisection of the medial and lateral gutters.
- Medial/lateral implant placement:
  - Match the medial gutter corner
- Anterior/posterior implant placement:
  - Anterior edge of the tibia

#### Talar Alignment Method

- Talus implant flexion is set to match the bottom of the foot.
- Talus implant is selected to maximize bone coverage while minimizing implant overhang.
- Anterior direction is set by the bisection of the medial and lateral gutters.
- The resection depth is set so the implant dome matches the natural talar dome

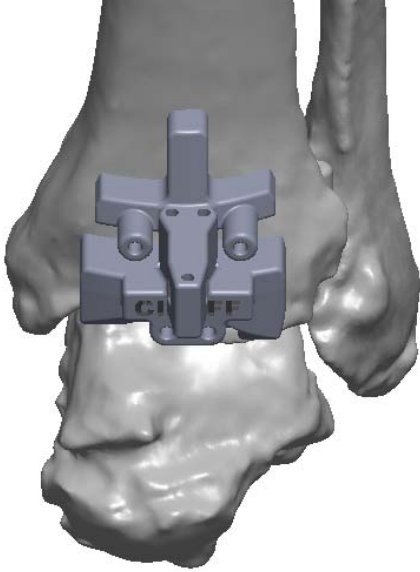
#### PROPHECY® Engineer Comments

---

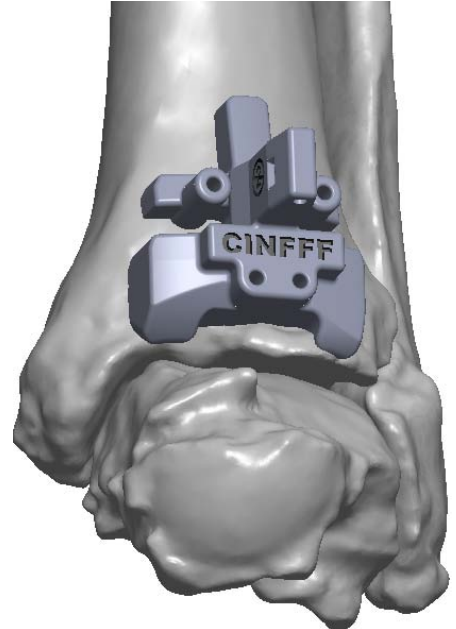
#### Recommended Implants

- Tibial component: 4 L
- Tibial insert: 4
- Talar component: 4
- PROPHECY® Part Number: PNY####

# INFINITY® Size 4 Left Tibia & Size 4 Talus Tibial Alignment Guide



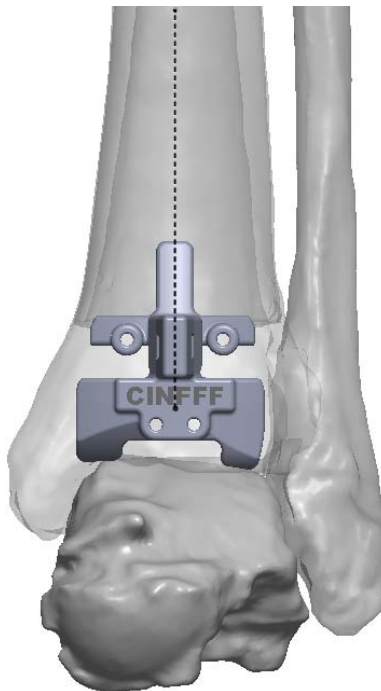
Superior View



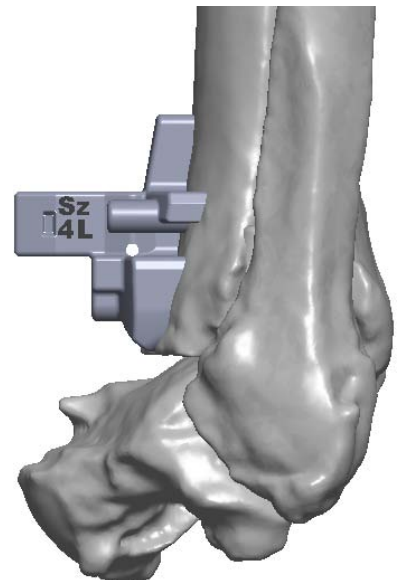
Inferior Oblique View



Medial View



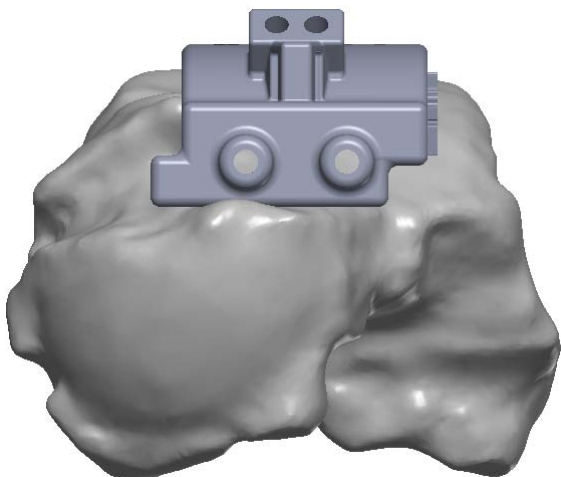
Anterior View



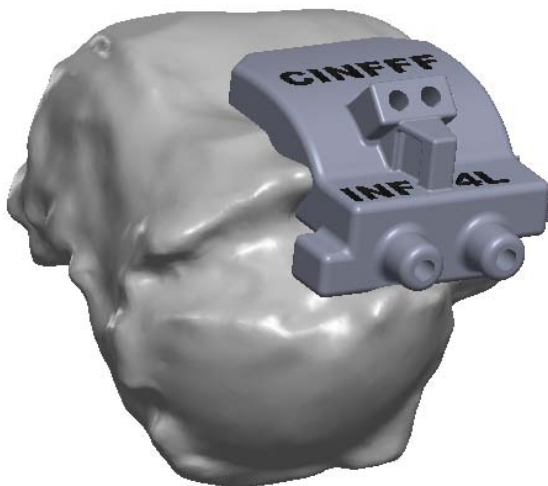
Lateral View

# INFINITY® Size 4 Left Tibia & Size 4 Talus Talar Alignment Guide

Anterior View



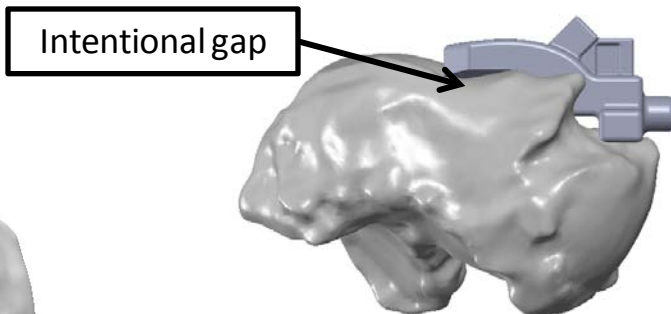
Superior Oblique View



Superior View



Medial View



Lateral View

